

Title: Where have all the floppies gone...
Products(s): MCAPI, Motion Integrator
Keywords: Floppy, Disks
ID#: TN1030
Date: April 27, 2000

Summary

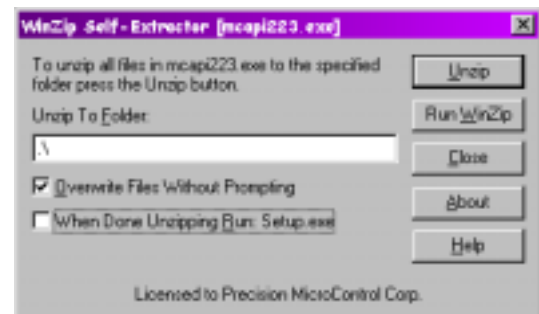
The most common method for obtaining PMC's latest application software is to download it from the World Wide Web. To simplify downloading, each application is provided as a single executable file in the form of a self-extracting archive. Customers who require installation floppies cannot directly use the single self-extracting archive if it is larger in size than the capacity of a single floppy. Currently several of these self-extracting archives exceed the single floppy capacity.

More Information

All of PMC's current applications that are larger in size than a single floppy are organized so that no single file is larger in size than a single floppy. The following instructions will explain how to create a set of installation floppies from one of these downloaded archives.

Copy the downloaded archive to an empty folder. Using an empty folder will make it easier to identify the component files of the archive after they have been expanded. We will refer to this folder as the "Install Folder."

The self-extracting archives provided by PMC offer an option to run or not run the setup program after the files in the archive have been expanded. By default this option is on. Start the downloaded archive running and clear the checkbox labeled **When Done Unzipping Run: Setup.exe**. Next click on the **Unzip** button to expand the files contained within the archive.



After the archive has been expanded delete the copy of the archive you placed in the Install Folder. This will leave only the expanded application files in the folder. Now look for the **DATAx.CAB** files (where x is an integer 1, 2, 3, etc.). Move (don't copy) each **CAB** file numbered higher than one (1) to a separate floppy and label the floppy with the **CAB** file number. When you have finished move the remaining files (there will be around 20) to a floppy and label it Disk 1.

To run the installation from floppies insert the floppy labeled "Disk 1" and run the program SETUP.EXE contained on the floppy. Insert the other numbered floppies as prompted.