

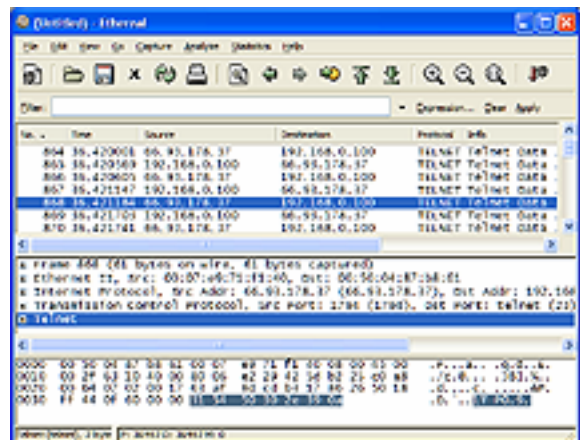
Title: Monitoring MultiFlex ETH 1000 Series Ethernet Communication Traffic
Products(s): MultiFlex ETH 1000 Series Ethernet Motion Controllers
Keywords: MultiFlex, Ethernet, diagnostic, troubleshooting
ID#: TN1068
Date: October 16, 2008

Summary

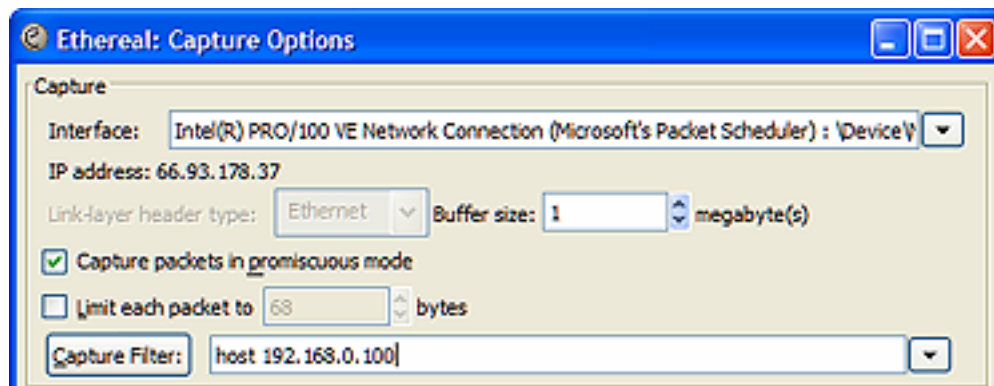
When troubleshooting Ethernet connected devices such as an MultiFlex ETH 1000 Series Ethernet motion controller, an Ethernet “sniffer” program can be a useful tool to monitor network traffic and diagnose communication problems. Wireshark is a popular and free sniffer program that works on a variety of platforms, including Windows and Linux.

More Information

You can download Whiteshark from <http://wireshark.org>. Make sure you download all the components required for your platform. In particular, Windows users will also need to download and install WinPcap (also available from the Wireshark web site).



In its default mode, Wireshark will capture all Ethernet traffic seen by the PC. On a busy corporate network the amount of data may be overwhelming. To reduce this traffic to communications with a single host (such as the MultiFlex Ethernet controller), you can limit the communications that Wireshark will capture. In the capture dialog, under the **Capture Filter:** entry, add the keyword **host** followed by the IP address of the controller:



Additional filter options are described in the Wireshark online help.