

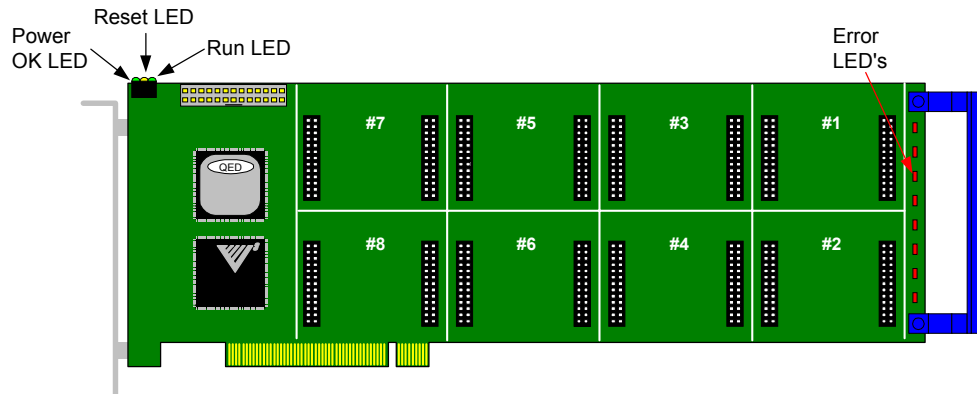
Title: DCX-PCI100 Controller Initialization
Products(s): DCX-PCI100
Keywords: Initialization, Troubleshooting, Status, LED
ID#: TN1059
Date: November 4, 2004

Summary

Once the computer is turned on the DCX-PCI100 Motion Controller goes through a two step initialization procedure. Step #1 (initial bootstrapping) occurs within the first couple of seconds. Depending upon the Windows version, step #2 (firmware download) occurs sometime before Windows has completed loading.

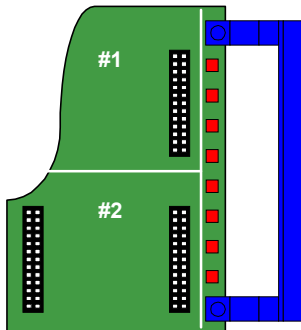
More Information

On-board LED's can be used to determine the initialization status of the controller.

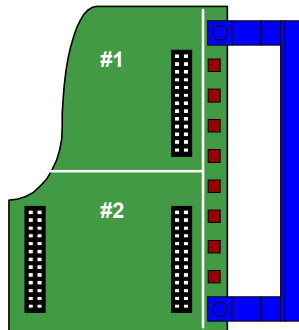


Step #1 - bootstrapping: Within the first couple of seconds the RED Error LED's will:

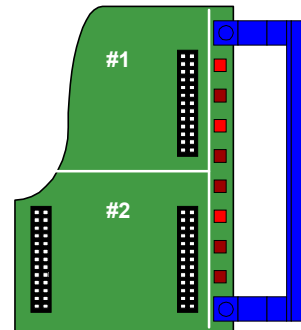
Bootstrapping Step #1 - all LED's on for about 1 second



Bootstrapping Step #2 - all LED's off for about 1 second

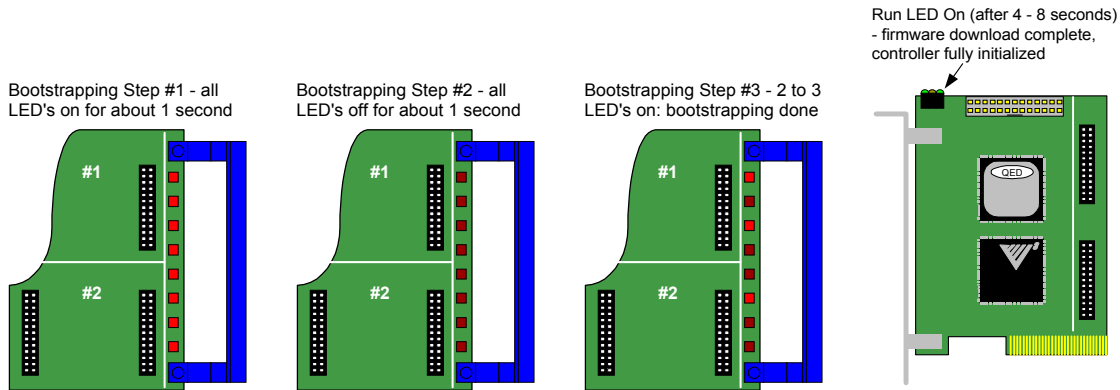


Bootstrapping Step #3 - 2 to 3 LED's on: bootstrapping done

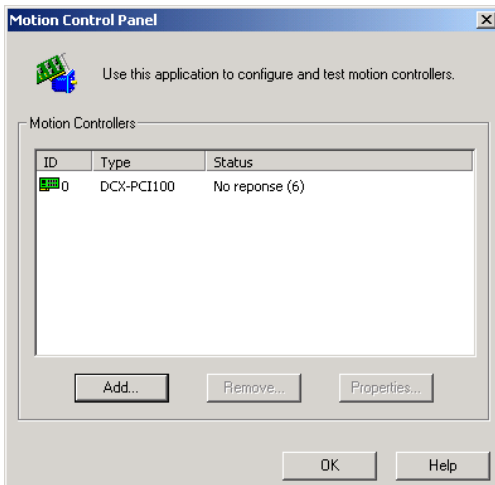


If the bootstrapping has failed (all LED's on or all LED's off) the controller has failed and you should contact Tech Support.

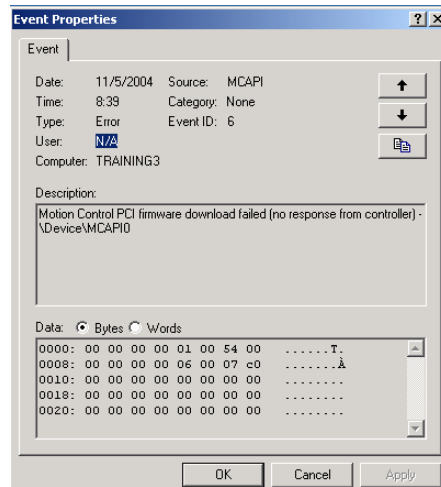
Step #2 - firmware download: sometime before Windows has completed loading the bootstrapping operation will be repeated and then 4 to 8 seconds later all Error LED's will be turned off and the Run LED will be turned on.



If after a successful bootstrapping the firmware download fails (the Run LED is not on) open the Windows Control Panel and Launch Motion Control. The status of the controller / firmware download will be indicated. For XP / 2000 / NT users additional information is available from the Windows Event Viewer.



PMC's Motion Control Panel will indicate the nature of a firmware download failure



The XP / 2000 / NT Event Viewer will provide additional failure information