

**Title:** MultiFlex ETH 1000 Series Network Discovery Tool  
**Products(s):** All MultiFlex ETH 1000 Series motion controllers  
**Keywords:** MultiFlex, Network, IP Address, Ethernet  
**ID#:** TN1081  
**Date:** January 20, 2012

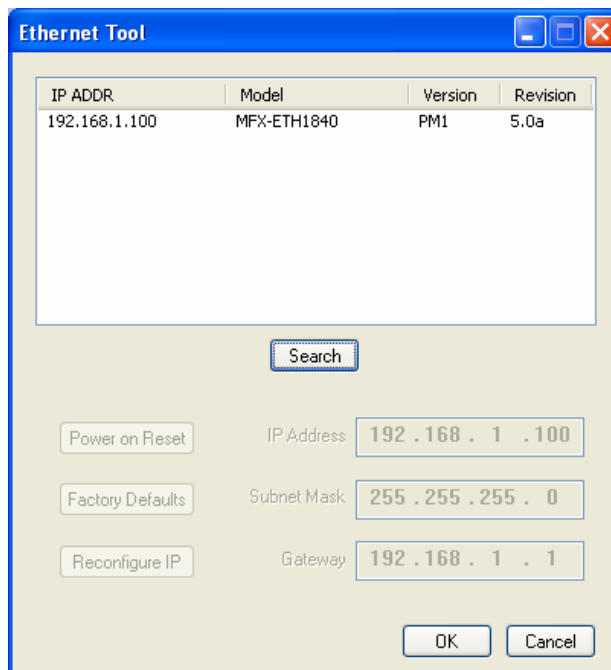
---

## Summary

MultiFlex ETH 1000 series motion controllers can be easily located on a network using PMC's Network Discovery tool

## More Information

Multiflex ETH controllers are shipped with a default factory IP address of 192.168.1.100 but this can be easily modified by the user by several means – through the use of the embedded web server network configuration tool, for example.



If the controller's address is changed to an unknown value, the Network Discovery Tool can locate the device, report its current IP address and allow the user to reconfigure the settings. All PMC controllers will respond to the unique UDP packet sent out as an IP broadcast by the discovery tool and report back its relevant network data, as shown above.